



*Maiden steam up for another of Charlie Reiter's 2.5" narrow gauge Heisler museum piece.  
More about locomotive in the Bits and Pieces article in this issue.*

# The CallBoy

December 2024

Pat Young CallBoy Editor  
10349 Glencoe Drive  
Cupertino, California, USA  
95014

# The CallBoy Newsletter

Official Publication of the Golden Gate Live Steamers, Inc.  
Copyrighted 2024

Tilden Park 2491 Grizzly Peak Blvd, Orinda, California USA 94563	Pat Young, Editor <a href="mailto:phty95014@yahoo.com">phty95014@yahoo.com</a>  <b>December 2024</b>	A 501(c)(3) Non-Profit Corporation <a href="http://www.ggls.org">www.ggls.org</a> or <a href="http://www.goldengatels.org">www.goldengatels.org</a>
---	---	--

## Board Officers

President:	Jon Sargent	510-233-6481
Vice President:	Rich Croll	510-227-9174
Secretary:	Matt Petach	408-256-2883
Treasurer:	John Lisherness	510-647-8443
Safety:	Jerry Kimberlin	510-809-7326
Director at Large:	Sammy Tamez	510-706-5614
Past President:	Rick Reaves	510-479-3386

## Ombudsperson

Lisa Kimberlin 510-214-2595

## GGLS Trust Fund Members

John Lisherness  
Jerry Kimberlin (elected March 2015)  
Sammy Tamez (elected August 2022)

## GGLS Committee Chair People

Bits & Pieces:	Jeremy Coombes
Boiler Testing:	Jerry Kimberlin
Building:	Rick Reaves
CallBoy Editor:	Pat Young
Dues:	Lisa Kimberlin
Grounds:	Andy Weber
Landscape:	Jo Ann Miller, Bruce Anderson
Librarian:	Pat Young
Locomotive:	Paul Hirsh
Membership:	Sammy Tamez
Public Train:	Walt Oellerich
Refreshments:	Walt Oellerich
Rolling Stock:	Rich Croll
Security:	Jon Sargent
Shop Foreman:	Rich Croll
Signals:	John Davis
Technical Talks:	Charlie Reiter
Track:	Jim McKibbin
Train Storage Rental:	Jon Sargent
Web Site:	Pat Young

## Club Correspondence

All correspondence to the Golden Gate Live Steamers should be sent to the secretary, Matt Petach at this email: [secretary@ggls.org](mailto:secretary@ggls.org)

## Membership

To qualify for membership, attend 2 monthly meetings. At the first meeting, please introduce yourself and obtain a membership application from the Membership chairman or Secretary. At the second meeting, return your completed application, a signed release form, the yearly prorated club dues, together with the \$25 initiation fee and you are officially a member.

## CallBoy

Articles, pictures, photographs, items for sale or any other information that would be of interest to the club should be sent to Pat Young, the CallBoy editor at [phty95014@yahoo.com](mailto:phty95014@yahoo.com)

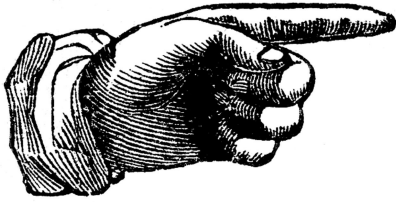
***Deadline for submittals to next month's issue is the 19th!***

## 2024 Calendar of Club Sponsored Events

12/08 General Meeting/Annual Meeting/Board Meeting  
12/14 BAEM meeting

## Announcements

### Please Notice This



We are in winter protocol now. Be sure to turn the water off and drain the pipes before you leave the property! If you don't know winter protocol yet or need a refresher, contact Andy Weber.



Dues and rental space fees are due now; if you pay dues before Dec 31st, you get a \$10 discount. There is no grace period for rental space fees so if you don't pay by Dec 31st, you lose your storage space.



Wednesday Jan 1st is the New Years Chili Run so let Sarah know if you will be making chili. We have an oven now, so we can heat items up when you get here.



The Dickens Fair is coming to the Cow Palace this November & December. We are transporting the 4-4-0 American from the clubhouse, Walt's Lion, along with 3 riding cars & a conductor car to the Cow Palace in San Francisco, California. If you would like to volunteer, you don't need to buy tickets to the event since the train is outside the event space. If you don't have a 1890's period costume, wear black with black, non-tennis shoes.

### **REDWOOD VALLEY RAILWAY**

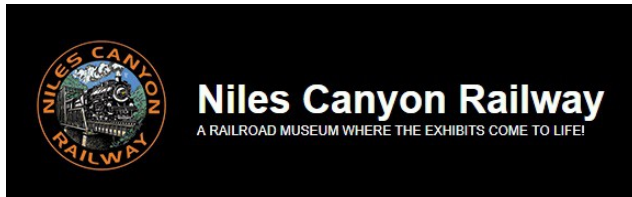
Ellen's Redwood Valley Railway holiday trains runs the two weekends before Christmas until 7 pm. Expect lots of riders to come down the hill to visit us.



Andy Weber talked about Bill Smith, one of the founders of the club who planted the redwood trees all around us. His son is over 90 now and can't operate his locomotives without help. He would appreciate people who can help him run the engines.



## Railroading Activities



Rahim rode the last steam train of the year at Niles Canyon Railway, Niles, California behind the Robert Dollar #3 tank engine and saw new GGLS member



Steven Fares working on the train crew.



Bruce Anderson went to Roaring Camp, Felton, California to watch their Heisler running up the mountain. He hopes to make a “Big Heislors/Little Heislors” video some day, like his “Big Shays/Little Shays” video, possibly starring Bill Hanna’s 3.5” gauge Heisler that he bought from Stan James.



Sarah Buhre went to Portola Valley & Alpine (PV&A) live steamers in Portola Valley, California for their meet weekend. She stayed up for night running & camped over, which was less creepy than doing night running at Train Mountain! Then she went to Sacramento Live Steamers for their meet with the Lion and did night running there as well.

Rich Croll took his ten wheeler to PV&A. After re-timing the valves, it ran well although he did manage to put the fire out once when climbing the hill. But he chickened out and didn’t stay for the night run; it can be scary after dark!

### **REDWOOD VALLEY RAILWAY**

Terry Strom did his last public runs at Redwood Empire. It was 104 degrees after lunch, so they stopped running since after 2:30, it’s too hot to be steaming up! Public train runs will resume next May, 2025.



Andy Weber took the Rocky Mountaineer from Vancouver, BC to Banff, riding on brand new beautiful full dome cars with crystal clear glass. They went through the famous spiral tunnel where you’re in darkness for 25 minutes and they have wonderful verandas you can ride to see the scenery as it rolls past. He saw lots of 200-car coal & grain trains going the other way to Vancouver.

## Minutes of the General Meeting

Officer Present: Matt Petach, Jerry Kimberlin, Jon Sargent, Lisa Kimberlin, Sammy Tamez, Rich Croll, Rick Reaves, John Lisherness with Sammy Tamez arrived late.

President Jon Sargent called the meeting to order at 1003 hours Pacific time.

### Officer Reports:

**President:** Thank you to everyone for all your help keeping everything running smoothly this year!

**Vice President:** Last Thursday, we had a great work party that got 3x as much done as expected. There's a good chance the Shattock barn retaining wall will get mostly done before the rain starts, we hope.

**Secretary:** Nothing new to report.

**Treasurer:** Not here yet, but apparently we still have money.

**Safety:** Nothing to report.

**Director at Large:** Nothing to report.

**Ombudsperson Lisa:** We have a slate of Board member nominees for the coming year. If you want to run for any position, let Lisa Kimberlin or Steven Fares know.

The current slate is:

Jon Sargent for President

Steven Fares for Vice President

Sarah Buhre for Secretary

John Lisherness for Treasurer

Jerry Kimberlin for Safety

Sammy Tamez for Director at Large

Lisa Kimberlin for Ombudsperson

### Committee Reports:

**Buildings:** Please feel free to take a derelict miniature building at the club facility home and rehabilitate it!

**Grounds/Landscaping:** Andy Weber has allergies and can't weed whack. If you can, please help with clearing of the weeds!

**Ground Track:** Please help with the raking of leaves at the club facility. There are a bunch of disposable bags for the leaves in the garden tool shed and once collected, they need to be driven down to the green waste bin. We can't just push them over the hill.

**High Track:** Still needs someone to assume the High Track chairperson who can give it some Tender Loving Care!

**Signals:** John reminded everyone that once the rainy season sets in, our track signals will get flakey, so always proceed with caution! He'll be gone until March, so Jim McKibbon will handle signals in his stead.

**Safety:** Nothing to report.

**Locomotives:** RGS #20 had a leak in the copper line feeding the axle water pump and that was replaced last Thursday.

The Public riding car's battery died and it was replaced with LiFePo4 battery & a new 10amp charger. It is a size 24 100ah battery with bluetooth monitoring built into it.

The 4760 diesel is having trouble pulling the Public Train. So when running it, don't exceed 130 amps of draw or the main breaker will pop.

The Heinz Atlantic's valve covers are back on and one thread is busted which will have to be redone.

Engine 8150 is gobbling fuel and putting out fumes. We likely need to adjust its fuel mixture.

There was nothing to report on the RGS #22, #1936 and Hunter Atlantic engines.

**Rolling Stock:** A few weeks back there was a report of a riding car making noises. So Rich Croll looked at the problem and one wheel had been rubbing on the underside of the car. Of the 8 bearings on the car 2 were loose on the axles, so he replaced them. He calculated the average lifespan of the bearings is about 10 years, but at 5 years, a significant percentage are starting to fail. He plans to replace all of them every five years.

**Shop:** Please put tools away when you are done!

**Public Train:** Thank you to everyone for helping out!

**Landscape:** Jo Ann Miller has been removing dead chaparral.

**Roundhouse and Storage:** Remember to close the roundhouse doors as soon as you pull your equipment out. We have seen evidence of rodents still sneaking in.

**Security:** New computer is in place and working well.

**Membership:** New badges are working well Thank you Charlie & Jerry!

**Library:** Nothing new to report.

**Website:** Many thanks to Lisa Kimberlin who help get a donation link set up on the club website.

**Builders Group:** Nothing to report.

**CallBoy:** The classified area near the end of the CallBoy has an individual who wants a Wanted 7" shaper.

**Old Business:**

None

**New Business:**

John Davis has a small steam engine model he would like to donate to the group.

Jon Sargent adjourned the meeting at 1048 hours Pacific time and we moved right into Bits and Pieces.

**Minutes of the Board Meeting**

**Officers Present:** Jon Sargent, Matt Petach, Rich Croll, Rick Reaves, Jerry Kimberlin, Sammy Tamez, John Lisherness and Lisa Kimberlin.

President Jon Sargent called the meeting to order at 1129 hours Pacific time.

**Old Business:**

Jon Sargent presented the minutes from the October 13th 2024 Board meeting for approval. Sammy Tamez made a motion that the Board accept them as presented and Rich Croll seconded the motion. With there being no discussion, no abstentions and no objections, the motion passing unanimously.

**Shattock Barn Retaining Wall:** Rich Croll gave an update on the Shattock Barn retaining wall project.



There is one more rock crib box to excavate & build at the end behind the shop wall which can done later. Rich ran out of rock on Thursday to fill the crib boxes and he gave John the last major bill for construction materials.

**Financial Update:** Treasurer John Lisherness noted we had a large amount of money in the clover account from electronic donations so he moved most of it to our main account.

We still have 2 checks outstanding in the Wells Fargo account. Secretary Matt Petach notified a member that the 180 day lifespan of the check is rapidly approaching and that he needs to deposit it soon or it will expire.

**Club Security Camera:** Jon Sargent reported that the new security computer is working well. We have a small issue with our Digital Watchdog license that needs to be straightened out with the company in order to get the online portal working again.

John will swap the memory cards out at Boyer's Bluff.





**Donation:** Louise Clerici is donating Andy's trench engine & gondola to GGLS. We have space in Bolger's barn for it although we might have some challenges lifting it up from her house in Napa. Matt Petach will share the contact information with Rich Croll.

**Donation:** Similarly Troy Tyler would like to donate his Generic Electric to GGLS. The Board agreed to accept it although arranging transportation still needs to be worked out.

**Public Train Rider Stickers:** We are running low on stickers for the Public Train riders again which requires us to order for more of them. Sarah has a friend who works at West Coast Sporting Goods and we can set up an account there to order stickers from them.

**Public Train Engineer Training Program:** John asked about our Public Train Engineer Training program and it turns out that trainer Paul Hirsh is currently out of the country. But he does have the training program written up and Jesse has been getting trained by John Davis.

**Club Water Supply Shutoff:** Speaking of training, Matt Petach asked if more people besides Andy can be approved to sign off on winter water protocol training. No, it turns out that it's something that Andy Weber wants to maintain control over.

**Delinquent Storage Payments:** Lisa Kimberlin pointed out there are 24 storage fee payments that have not been made yet for 2025. If a member's status lapses for non-payment of dues, they will need to pay the \$25 reinstatement fee & \$50 and they don't get the \$10 prepayment discount because they let their account lapse.

**Building Chairperson Vacancy:** Rick Reaves will be moving out of state next Spring so we'll need to find a new person for the Buildings chairperson position.

Sammy Tamez moved to adjourn the meeting at 1212 hours Pacific time. With no objections the meeting was adjourned.

## Winner of the Most Creative

By Becky Pereira

Hello,

I work at Cal State East Bay and the week before Thanksgiving there is a competition between departments to make a creative basket to fill with donations for the student food pantry.



I wanted to share my departments entry with you. Can you guess who came up with the theme this year?

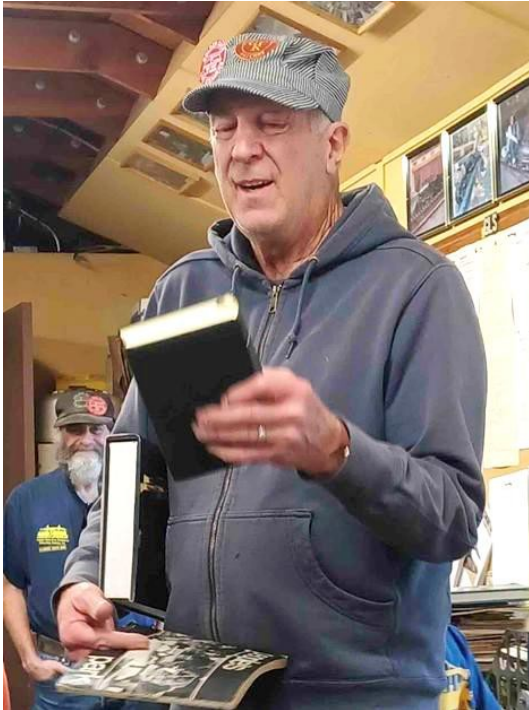


Manuel, my husband, spent almost the entire Veterans Day weekend working on this with a little help from me.

Becky Pereira

## Bits and Pieces

By Jeremy Coombes  
Photographs courtesy of  
Bruce Anderson and Pat Young



Andy Weber brought in some books from a friend's personal library, which covered a variety of subjects.



They were of high quality and Andy offered them to any interested member. Thanks Andy!



Rahim Pereira has been expanding his practical engineering knowledge using Lego and constructed a 0-4-0 wheel layout where he figured out how to build the cylinder & piston.



The model actually operates correctly and is proof this young man has a very bright future in our hobby. I can't wait to see what he will be bringing to Bits and Pieces in four or five years.

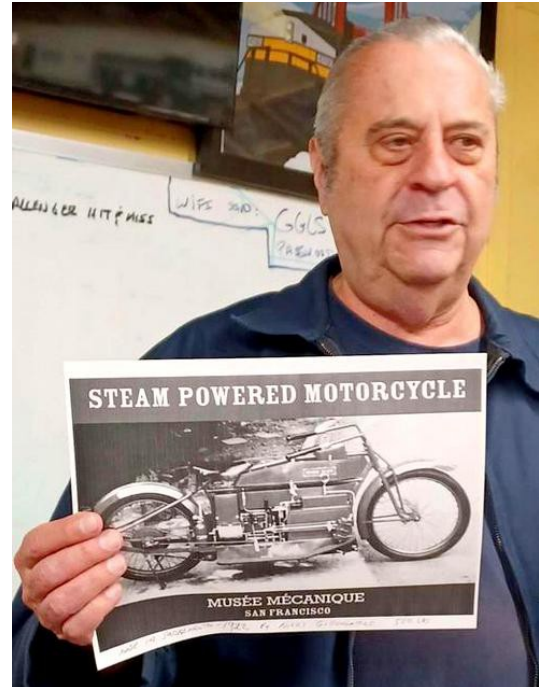




Rich Croll had some leftover feet from a flat TV screen wall mount and couldn't bring himself to throw them away. In the true spirit of model engineering, he finally found a use for them in a recent project.



For more years than Rich will admit, he has been using a self-described "crappy" set up to support long pieces when using his portable band saw. So he used the feet to construct a custom height stock support. Ingenious idea Rich, what else have you got stashed away waiting to find a purpose?



Jon Sargent has been out-and-about again, and this time had a report on a visit to the Musée Mécanique at Pier 45 in San Francisco. This little museum is a must see for those interested in mechanical toys, coin operated pianos, antique slot machines and animations. It was started shortly after World War Two by the late Edward Zelinsky. It has been family owned & operated ever since, but the item that really caught Jon's eye was a steam powered motorcycle.



In speaking with Dan Zelinsky he was told that it was made around 1912 in Sacramento by a man named Gillingwater and is still in working order.





Stephen Fares has decided his first locomotive build will be of the ex-Southern Pacific 1744, a 2-6-0 Mogul and while doing some research came across an actual SP timetable from 1935.



Since 1744 possibly worked to this very schedule Stephen decided he had to have it for his documentation collection. I'm sure all of us will be looking forward to seeing your 1744 project forge ahead and take shape.



Last, but certainly not least, was Charlie Reiter who, it appeared, didn't bring anything. After a quick check to make sure hell hadn't frozen over, Charlie was questioned as to why he had nothing for Bits and Pieces. Well, it turned out what he brought was too big to show in the clubhouse and was sitting outside on one of the steaming bays.



Charlie's latest creation is a 2½" scale Heisler that he began designing in 1994, using paper & pencil no less, and had started & stopped many times. This is often the process Charlie uses as he does not try to force a project forward but will often set it aside while he works on something else. As time progressed items for the boiler found their way to the growing collection of material and the design gradually took shape. If you look closely at the photographs, you may notice that there are no balance weights on the wheels. According to Charlie this was because at the time the prototype was built a lot of the design refinements found in later locomotives had not yet been developed. I guess they really could have used a Charlie Reiter!



## More T.L.C. for the 4-6-0 Susanna

By Bruce Anderson

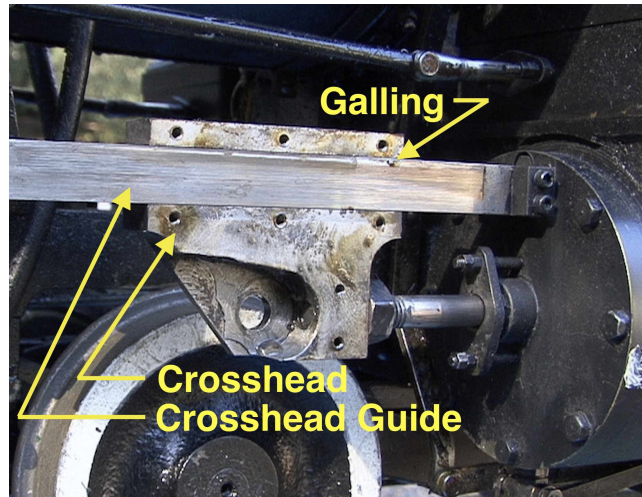
In the October 2024 CallBoy I wrote about the 4-6-0 Susanna that was frozen in place. A few weeks ago I got a call from Susan Debeling and found out the locomotive was still locked up. At the time there appeared to be four possibilities: a frozen piston, a frozen piston rod, a frozen crosshead, or a combination thereof.

I told Susan that I once had the Dave Gumz 4-6-0 freeze up solid on me. My issue turned out to be inadequate lubrication of a crosshead leading to galling. I knew lubrication was important but hadn't learned about galling yet. What is galling? Galling is "a type of adhesive wear that occurs when two metal surfaces slide against each other and stick together — especially with poor lubrication." At the time I was only using household 3-In-One oil — wrong! Some may not agree with this but like two well respected builders, I now use 30 weight automobile oil for general lubrication. Apparently the GGLS Public Train uses either Way Oil (Mobil Vactra Oil No. 2 (ISO VG 68)) or Phillips 66 TCS Slideway Lubricant 68. These oils have enhanced adhesive properties so it's less likely to be washed away. Our Public Train also gets considerably more use and load.

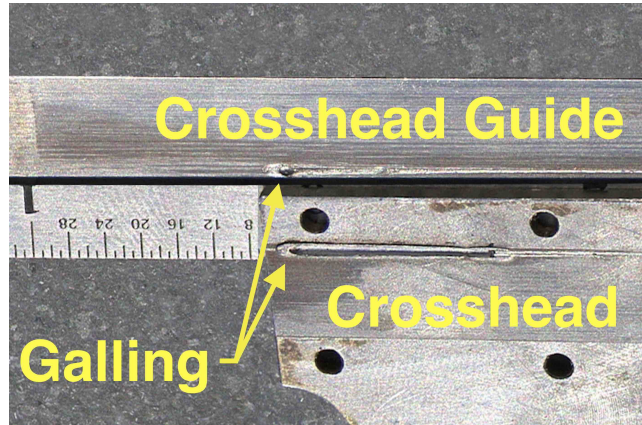
It was something how metal could grow like a snowball causing a puddle that would freeze my locomotive solid, it was another learning experience for me. It was also small, only the size of a few grains of sand.

Of course steam oil is used in both mechanical and displacement lubricators for cylinders.

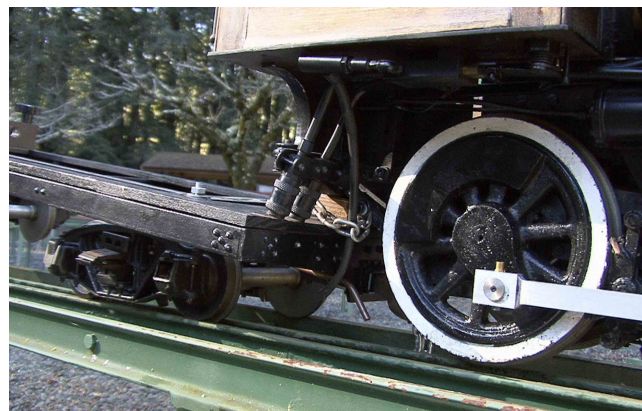
Bottom line, don't forget to lubricate your engines!



A closer look at the galling between the Crosshead Guide and Crosshead.



I was able to use my fuel car as a lever to raise the drive wheels off the track in order to return my locomotive to the Steaming Bay. Once in the Steaming Bay I could explore, diagnose, and resolve the issue.





## Wanted

Small Shaper  
November 20, 2024

I am a fourth year mechanical engineering college student who is trying to buy a shaper. As one would guess from being a member of GGLS, I love machining and have made a couple steam engine models myself, such as this compound stationary engine shown below:



I currently have an old South Bend 9" lathe and a Burke #4 horizontal milling machine that get a fair bit of use, but I am trying to find a small 7" or equivalent shaper to add to my tool set.



Ideally I would like a South Bend shaper like the one shown above, but I would be interested in any small shaper that doesn't weigh over 400 pounds.

Contact me if you have anything of interest along with details.

[andrewosborncollege@gmail.com](mailto:andrewosborncollege@gmail.com)

Or call me at 415-747-5142

## For Sale

1/4" scale Case Steam Tractor Engine



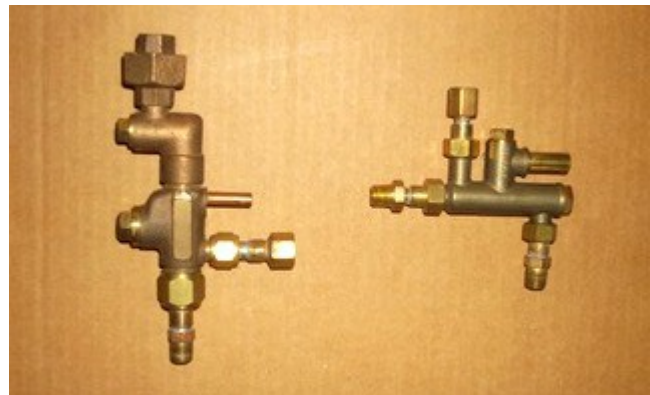
This is a model of a 1/4" scale Case steam traction engine. The tractor was professionally built by Turning Mfg. in 1993, has a steel welded boiler and is coal fired.

The length is 5'4", width is 29" wide at the rear wheel axle, and the rear wheels are 19 1/2" in diameter.

The total weight is close to 500 pounds without water in the boiler & feed tank.

The safety valve pressure is set to lift at 150 PSI and there is a ASME standard soft plug in the crown sheet.

The boiler feed pump is driven from the engine and the governor works to control load speed. Also included is a full set of drawings.



Included are two injectors (where one of them is a super scale type) and extra front wheels.

**Asking \$10,500**

Contact Loren Bryon for more information.  
[hlbryon@comcast.net](mailto:hlbryon@comcast.net)  
650-591-0457

**For Sale**  
**Machine Shop Equipment**

By Bruce Anderson  
September, 2024

Past GGLS member John Maryott has decided it's time to sell off his shop. John was both a High School Machine & Auto Shop instructor and in retirement, he's collected quite the collection of tools. Now he's planning on selling his lathe & tooling as a unit, his mill & tooling as a unit and the remainder as individual items. I was interested in a bench vise and he had a pedestal vise but I could not budge it.

Some of John's items include:



Birmingham YCL-1440GH Lathe & Tooling

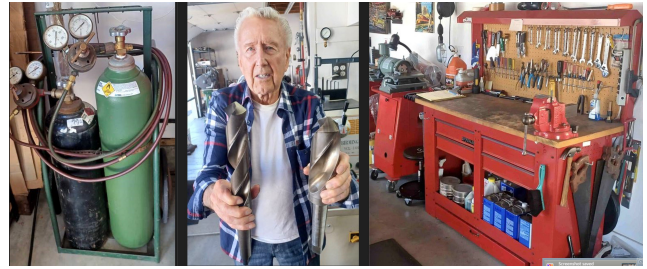


Birmingham BPS-1649 Mill & Tooling





Rockwell 14" Band Saw  
Apex 16" Disk Sander



plus..., plus..., plus much more.

He also has some projects under construction including:



Case Traction Engine

I think I saw four different drill presses, both gas & electric welding equipment, multiple filled tool boxes, etc. His collection is extensive and access to his Danville shop is relatively straight forward.

He will be unavailable parts of September, 2024 but be back in Danville in October.

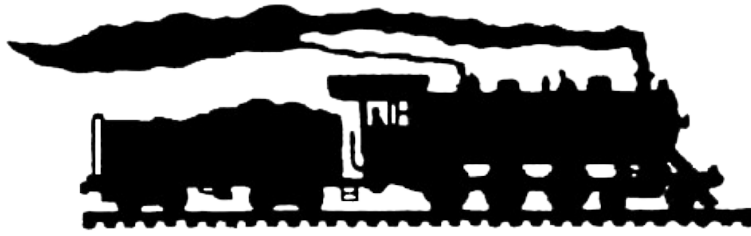
*Items are half off current catalog prices or Best Offer.*

If you are interested in any of the items or have questions, contact John by phone at:  
**925-786-3696.**



Central Pneumatic Bead Blaster #42202





GOLDEN GATE LIVE STEAMERS, INC.  
TILDEN PARK BERKELEY, CA.

### Membership & Roundhouse Dues Renewal Notice

It is time to renew your Golden Gate Live Steamers membership & roundhouse dues for 2025.

Regular Member (lives within 100 miles of club facilities):	
If renewed <b>on or before December 31, 2024</b>	<b>\$ 40</b>
If renewed on or after January 1, 2025	\$ 50
If renewing after March 31, 2025, see note below.	
Associate Member (lives beyond 100 miles from club facilities):	\$ 30
Family Membership:	
If renewed <b>on or before December 31, 2024</b>	<b>\$ 50</b>
If renewed on or after January 1, 2025	\$ 60
Roundhouse & Storage Fees:	\$300
Boyer's Bluff:	\$100
Bulger Barn:	\$200
Diamond Back	\$150

Note:

**Roundhouse & Storage fees are due now and must be paid by December 31<sup>st</sup>.**

Please make the check out to “**GGLS**” and send them to the following address:

Lisa Kimberlin  
324 Nevada Avenue  
Point Richmond, CA 94801

***If payment is not received by March 31, 2024, your name will be deleted from the club roster and require a \$25 initial fee to be reinstated.***

**The Golden Gate Live Steamers is a 501(c)3 non-profit corporation.**